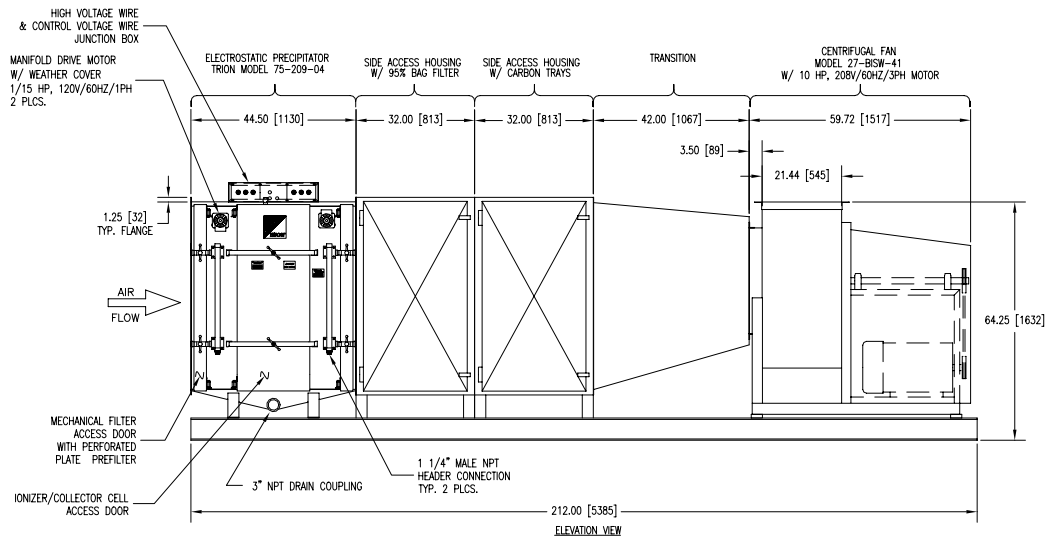
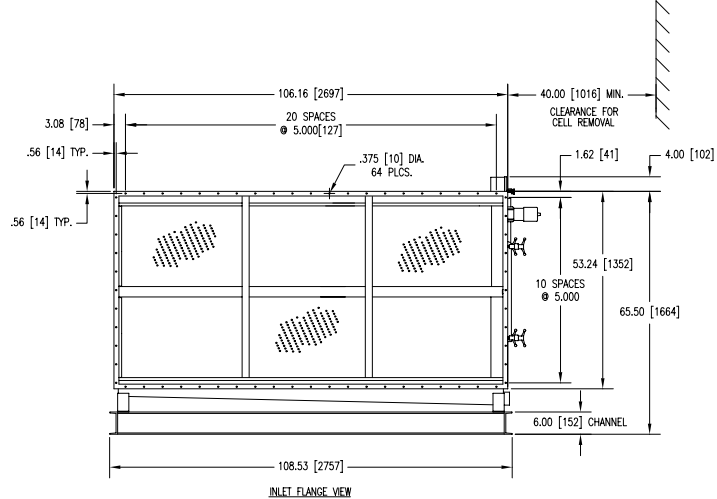
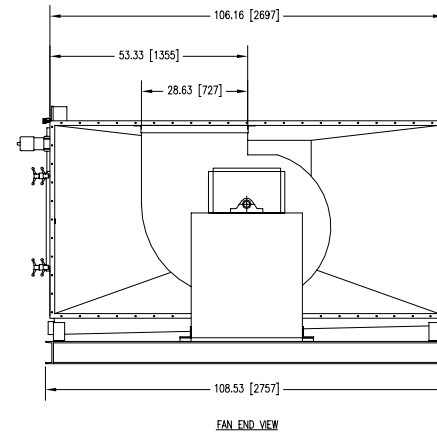
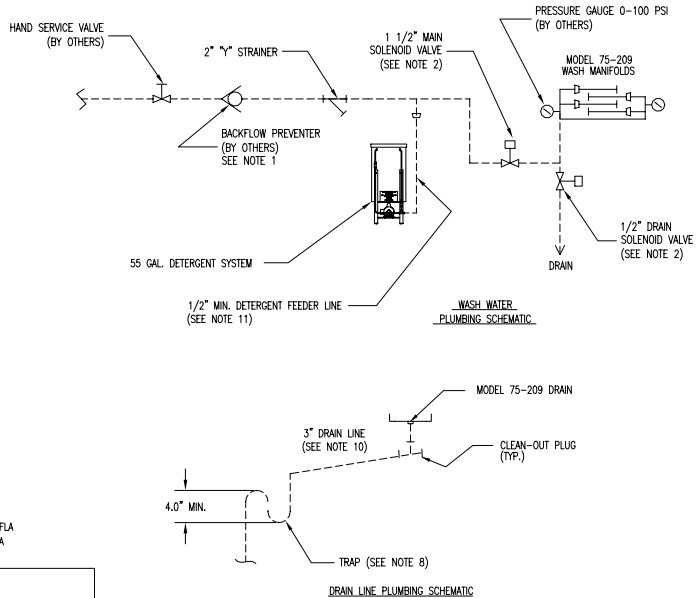


NOTES:

- 1) THE BACKFLOW PREVENTER MUST BE LOCATED UPSTREAM FROM THE DETERGENT FEEDER LINE CONNECTION AND "Y" STRAINER. THIS DEVICE SHOULD BE CONTINUOUS PRESSURE TYPE AND INSTALLED IN ACCORDANCE WITH ALL APPLICABLE PLUMBING CODE REQUIREMENTS.
- 2) SOLENOID VALVE COIL MUST BE MOUNTED UPRIGHT. APPROXIMATE PRESSURE DROP ACROSS SOLENOID VALVE AT MAXIMUM SUPPLY LINE PRESSURE IS 10 PSI.
- 3) WASH WATER REQUIREMENTS: 47.9 GPM @ 50 PSI.
- 4) AVERAGE WASH WATER CONSUMPTION: 168 GALLONS.
- 5) IT IS RECOMMENDED THAT HOT WATER (MIN. 120°F) BE USED FOR A MORE EFFICIENT WASH CYCLE. HOT WATER TANKS SHOULD BE LOCATED AS CLOSE AS POSSIBLE TO THE UNIT BEING WASHED AND SUFFICIENT PIPING MUST BE PROVIDED SO THE WATER FLOW IS NOT RESTRICTED NOR WATER PRESSURE APPRECIABLY REDUCED.
- 6) PIPING AND PRESSURE GAUGE SHOWN BY PHANTOM LINES IN SYSTEM PLUMBING SCHEMATIC SUPPLIED BY OTHERS.
- 7) UNIT WEIGHT (ESTIMATE) WITH POWER PACKS AND CONTROLS: 7,000 LBS.
- 8) SYSTEM SHOWN WITH RIGHT HAND ACCESS.
- 9) DRAIN LINE TRAP MUST PROVIDE SUFFICIENT WATER COLUMN TO OVERCOME THE INTERNAL STATIC PRESSURE OF THE AIR HANDLING SYSTEM IN WHICH THE MODEL 75 IS INSTALLED.
- 10) ALL PIPE COMPONENTS (VALVES, PRESSURE GAUGE, BACKFLOW PREVENTER) SHOWN ON THIS DRAWING ARE TO BE LOCATED IN PROXIMITY TO MODEL 75 UNIT.
- 11) ALL DRAIN PIPE SHOULD ALLOW FOR MAXIMUM AVAILABLE SLOPE. FAILURE TO PROVIDE MAXIMUM SLOPE FOR DRAINAGE WILL RESULT IN THE DRAIN SYSTEM NOT OPERATING AT ALL OR INEFFECTIVELY.
- 12) INJECT DETERGENT LINE INTO MAIN WATER LINE AS CLOSE AS POSSIBLE AND UPSTREAM FROM THE PREFILTER WASH COLLAR MANIFOLD HEADER.
- 13) FAN RATING: 10 HP, 10,000 CFM @ 4.0 S.P.
- 14) PROTECT ALL WASH WATER AND PLUMBING COMPONENTS THAT ARE SUBJECT TO FREEZING.
- 15) MODEL 75-209-04 SUPPLIED WITH PERFORATED PLATE PREFILTER & METAL MESH AFTERFILTER.
- 16) THIS SYSTEM REQUIRES THREE ELECTRICAL CIRCUITS: CONTROL - 120VAC/60HZ/1PH @ 30 AMP. MAX.
 DETERGENT SYSTEM - 208 VAC/60HZ/3PH RATED @ 4.8 FLA
 BLOWER MOTOR - 208 VAC/60HZ/3PH RATED @ 31.0 FLA

- ETL LISTING TO UL 867 "ELECTROSTATIC AIR CLEANERS"
- UL LISTED YXYS & YXYS7 (CANADA) "HOOD AND DUCT ACCESSORIES"
- FANS FOR KITCHEN EXHAUST SYSTEMS UL LISTED UL762 "POWER ROOF VENTILATORS FOR RESTAURANT EXHAUST APPLIANCES"
- DESIGNED IN ACCORDANCE WITH THE RECOMMENDED PRACTICES OF NFPA 96 STANDARD FOR VENTILATION CONTROL AND FIRE PROTECTION OF COMMERCIAL COOKING OPERATIONS.



		UNLESS OTHERWISE SPECIFIED USE			MODEL 75-209-04 SYSTEM OUTLINE		D W G	
SCALE	1/16"=1"	2 DEC. PLACE	3 DEC. PLACE	ANGLES	± 1/2°		SAMPLE DWG	
DR.	AMO	CHKD.	APP.	DATE	TRION®		1/1	
NEXT ASSY	USED ON	DATE	DATE	DATE	6-18-04		7899977-02 TRION, Inc. 04/20/04 NC 27358	